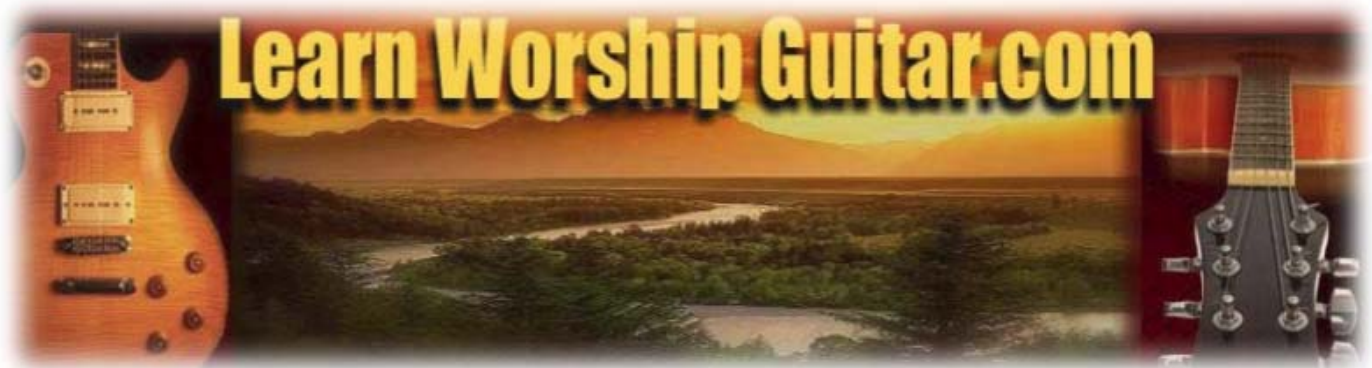


# LEARN WORSHIP GUITAR

---



GUITAR CHORDS  
MADE EASY

DEAN PALACIO

## Guitar Chords Made Easy

There is an easy way to learn chords and there is a hard way to learn chords. I hope that you will see it my way and take the easy path presented in this section. Not only will you learn hundreds of chords quickly, but you will have a better understanding of how chords work.

Chords are 2 or more notes played at the same time. Usually 3 There are all types of chords. The most common chord is the major chord. Minor chords and Dominant 7th chords are used quite often as well. Some of them may have strange sounding names at first, but don't let the name scare you.

Knowing a little about key signatures and intervals will go a long way when learning chords. If you an experienced musician and had some basic training on music and interval you will understand this. If not, no worries! It's good to learn new things.

*Remember to take your time when learning chords.*

Even if you are an experienced guitarist you will benefit from what you will find here. You'll discover how to play all types of chords, but most importantly you'll be able to play them anywhere on the neck of the guitar!

Why do most people learn the hard way? Well, it's not by fault of their own by any means. Most learning materials are just "chord encyclopaedias" with page after page of chords. Some of them have *thousands* of chord diagrams. How is anyone ever going to be able to learn that many chord patterns?! I don't think it's even possible!

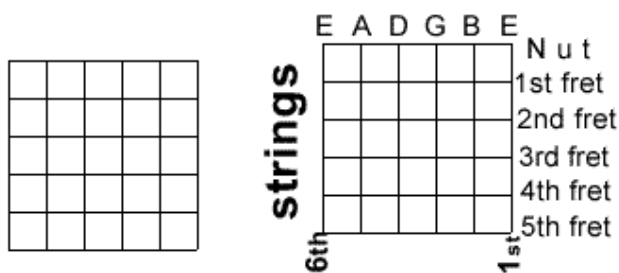
You, on the other hand, are blessed! There is an easier way. And it all begins with just 5 basic chord patterns, but more on that in a moment.

### How To Read A Chord Diagram

Chord diagrams show you how to play new chords.

Below is a blank chord diagram. *Think of it as a picture of your guitar sitting in front of you.*

The 6 vertical lines represent the 6 strings on a guitar (low E on left side, high E on right). The horizontal lines represent frets except for the top line which is the nut of the guitar.



● Black dots on the diagram tell you what fret and string to place your fingers. Numbers inside the dots tell you which finger to use.

○ White dots mean to play the string open.

## Guitar Chords Made Easy

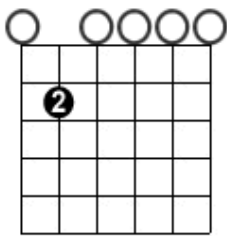
Here's how the fingerings are mapped out on your hand:



**2**=second finger

**Try it!**

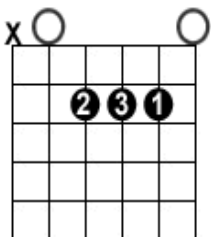
To play the chord on this chart, place your 2nd finger on the 2nd fret of the 5th string and strum all six strings.



**You just played an Em7 chord**

**Important:**

If you see an "X" on a chord chart that simply means that you do not strum that string, otherwise all strings are played. In the example A chord below you'll see an "X" over the 6th string. This means that the string is not used in the chord, so you will not strum it when playing the chord.



To play this chord, you place your 2nd finger on the D string (4th) at the second fret, your 3rd finger on the G string (3rd string) at the second fret, and your 1st finger on the B (2nd) string second fret. The A string (5th) and High E string (1st) will be played open ("open" means that the string is not fretted, but strummed in the chord pattern).

# Guitar Chords Made Easy

## Playing Chords

When you're first learning to play chords, it can be very difficult to get your fingers to cooperate. After a few days of practice your fingers will start remembering where to go. It's important to spend a little time everyday with problem chords until you are comfortable with playing them.

Your fingertips on your fret hand will become sore and tender to the touch. If it becomes too painful, by all means stop practicing for the day and try again the next day. With steady practice you will develop calluses on your fingertips and this won't be any more problem.

If you're hearing a buzzing sound or the sound of the notes being played sound dull, then your not pressing hard enough on the strings, or one or more of your fingers is catching a nearby string. When you strum the chord each not should ring out clearly. You may find it hard at first to press all of the strings down firmly against the frets. Don't worry, your hands will build up the strength in no time with practice.

## Some Random Tips:

- Don't let your fingernails get too long! They will prevent you from fingering the fretboard correctly.
- Make sure your fingers are standing straight up and down. Otherwise they may mute other strings.
- When playing chords your fingers should be arched at the joints so that your fingertips come in contact with the strings and not the flat fingerprint part of your finger.
- Your fingers should make contact with the strings slightly behind the frets if at all possible. The further your finger is from the fret the harder it is to apply the proper amount of pressure, hence the more likelihood that you'll get a "buzzing" sound.
- The size of your hand and the width of your instrument's neck can significantly affect which fingers you use to play the chords. All of the chord charts on this site use the most commonly used chord fingerings. These fingerings will work for 95% of all guitarists.
- You may come across a suggested chord fingering that you simply cannot contort your fingers to play. In this case try experimenting with alternate fingerings.

## C-A-G-E-D Major Chords

On the guitar there are only 5 basic major chord patterns. They are C, A, G, E, and D which are also called "major" chords. Together they spell the word CAGED which should help you remember them. All other chords that you will learn come from them. Let's learn them now:

## C-A-G-E-D The 5 Basic Chord Patterns

### What is C-A-G-E-D?

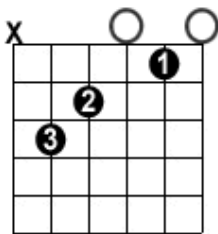
Most of the chords that you will learn in the future can be derived from 5 basic chord patterns: C, A, G, E, and D. Together they spell the word CAGED which should help you remember them. They are also called **major chords**.

### What To Do

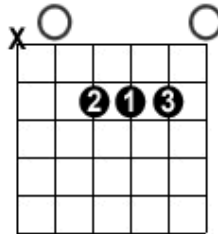
Learn and memorize each chord pattern. Take your time to insure that you are playing them correctly. Each pattern is accompanied a picture of the chord being played and an audio sample of what the chord sounds like when played properly.

Guitar Chords Made Easy

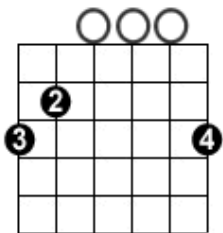
**C Major**



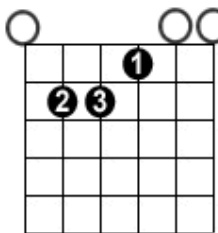
**A Major**



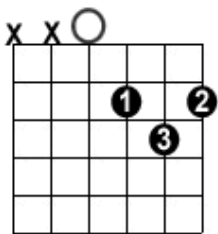
**G Major**



**E Major**

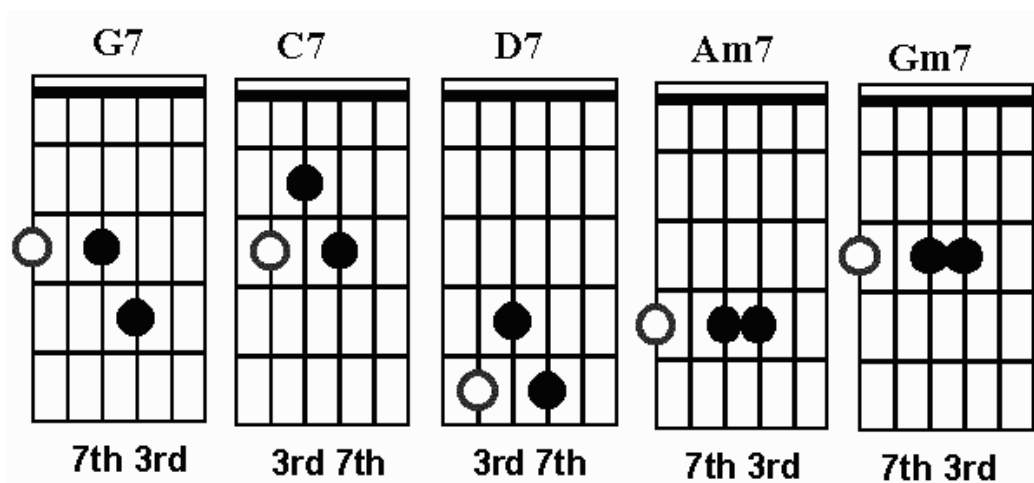


**D Major**

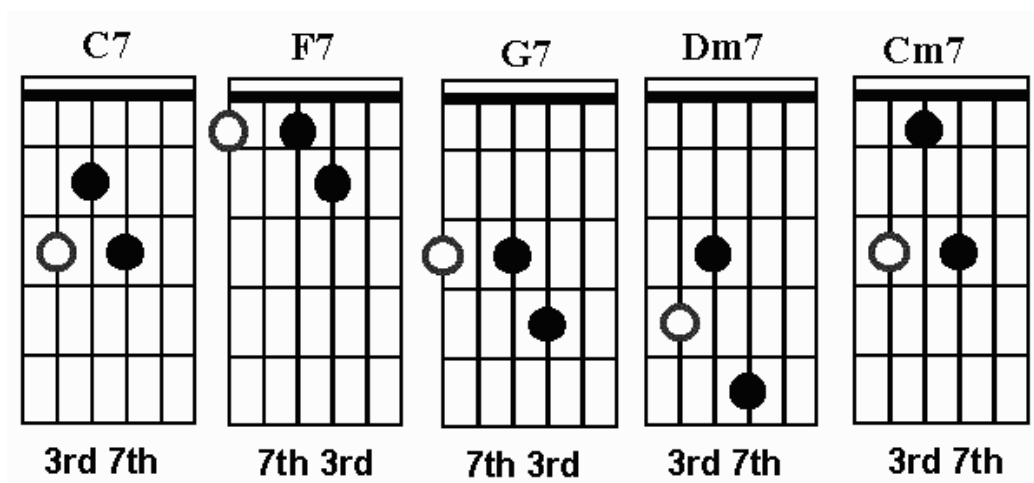


## Guitar Chords Made Easy

### No. 1



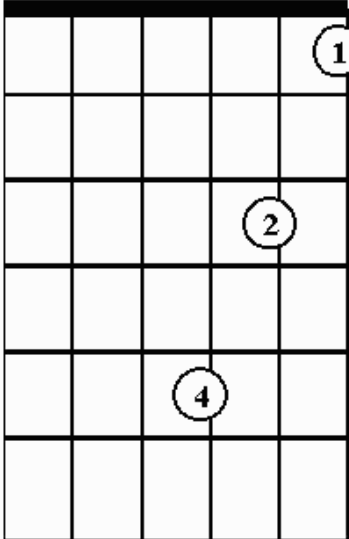
### No. 2



## Guitar Chords Made Easy

### No. 3

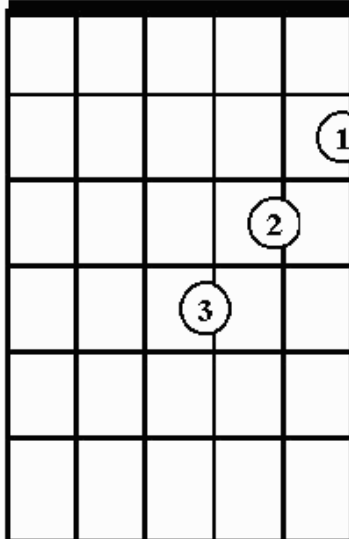
#### **Dm7 - F6**



A guitar fretboard diagram with 13 frets and 6 strings. Fingering numbers are shown in circles: 1 on the 1st fret of the 5th string, 2 on the 2nd fret of the 4th string, and 4 on the 4th fret of the 3rd string.

01 Dm7  
03 Em7  
04 Fm7  
06 Gm7  
08 Am7  
10 Bm7  
11 Cm7  
13 Dm7

#### **D6 - Bm**

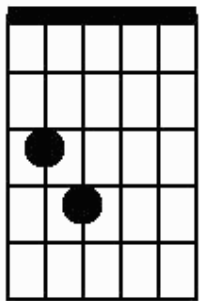


A guitar fretboard diagram with 14 frets and 6 strings. Fingering numbers are shown in circles: 1 on the 1st fret of the 5th string, 2 on the 2nd fret of the 4th string, and 3 on the 3rd fret of the 3rd string.

02 D6  
04 E6  
05 F6  
07 G6  
09 A6  
11 B6  
12 C6  
14 D6

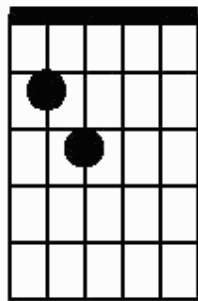
### No. 4

#### **D7**



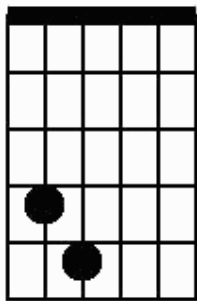
7 3

#### **G7**



3 7

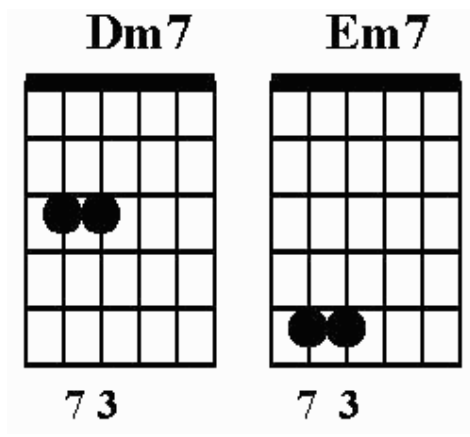
#### **A7**



3 7

## Guitar Chords Made Easy

### No. 5



### No. 6

#### **2 Note Blues Sample**

**4/4**

D7      G7      D7      D7

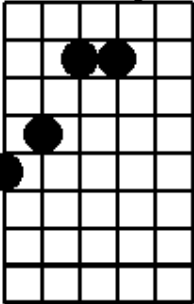
G7      Dm7   G7      D7      D7

Em7   A7      Dm7   G7      D7      Em7   A7

## Guitar Chords Made Easy

### No. 7

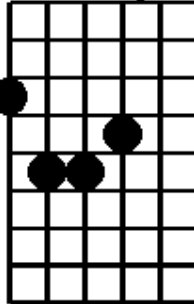
**A major**



1 2 3 4 5 6 7 8  
6 5 4 3 2 1

2nd fret = A  
4th fret = B  
5th fret = C  
7th fret = D  
9th fret = E  
10th fret = F  
12th fret = G

**G major**

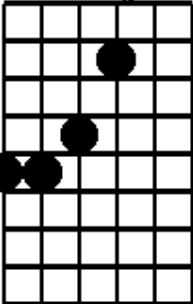


1 2 3 4 5 6 7 8  
6 5 4 3 2 1

1st fret = F  
3rd fret = G  
5th fret = A  
7th fret = B  
8th fret = C  
10th fret = D  
12th fret = E

### No. 8

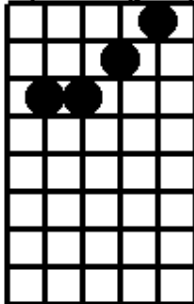
**D major**



1 2 3 4 5 6 7 8  
6 5 4 3 2 1

2nd fret = D  
4th fret = E  
5th fret = F  
7th fret = G  
9th fret = A  
11th fret = B  
12th fret = C

**(F major)**

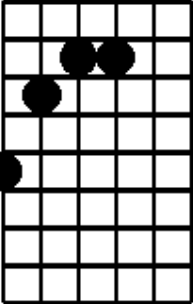


1 2 3 4 5 6 7 8  
6 5 4 3 2 1

1st fret = F  
3rd fret = G  
5th fret = A  
7th fret = B  
8th fret = C  
10th fret = D  
12th fret = E

### No. 9

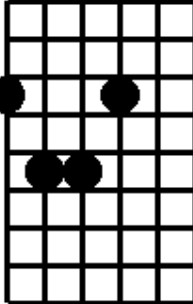
**A minor**



1 2 3 4 5 6 7 8  
6 5 4 3 2 1

1st fret = F  
3rd fret = G  
5th fret = A  
7th fret = B  
8th fret = C  
10th fret = D  
12th fret = E

**G minor**



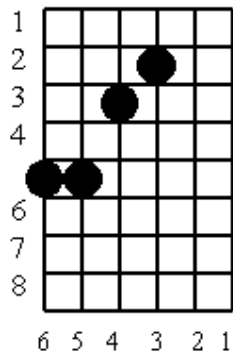
1 2 3 4 5 6 7 8  
6 5 4 3 2 1

1st fret = F  
3rd fret = G  
5th fret = A  
7th fret = B  
8th fret = C  
10th fret = D  
12th fret = E

## Guitar Chords Made Easy

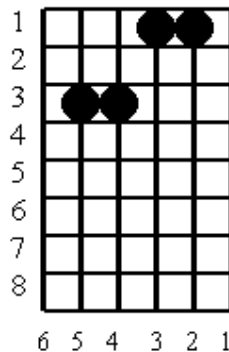
### No. 10

#### **D minor**



2nd fret = Dm  
4th fret = Em  
5th fret = Fm  
7th fret = Gm  
9th fret = Am  
11th fret = Bm  
12th fret = Cm

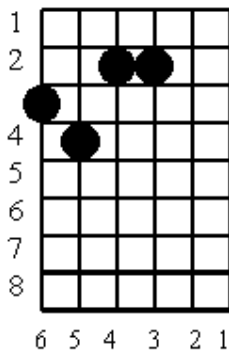
#### **( F minor )**



1st fret = F  
3rd fret = G  
5th fret = A  
7th fret = B  
8th fret = C  
10th fret = D  
12th fret = E

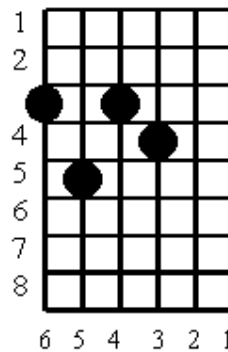
### No. 11

#### **A7**



2nd fret = A7  
4th fret = B7  
5th fret = C7  
7th fret = D7  
9th fret = E7  
10th fret = F7  
12th fret = G7

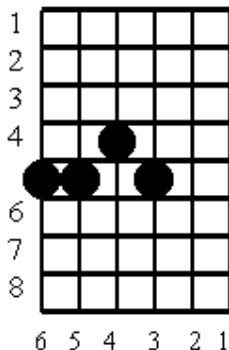
#### **G7**



1st fret = F7  
3rd fret = G7  
5th fret = A7  
7th fret = B7  
8th fret = C7  
10th fret = F7  
12th fret = G7

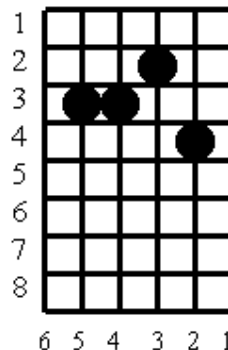
### No. 12

#### **D7**



2nd fret = C7  
4th fret = D7  
6th fret = E7  
7th fret = F7  
9th fret = G7  
11th fret = A7  
12th fret = B7

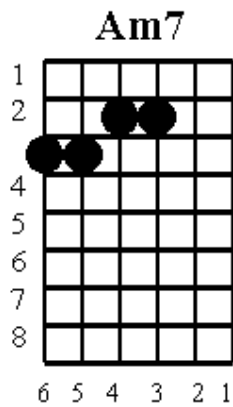
#### **( F7 )**



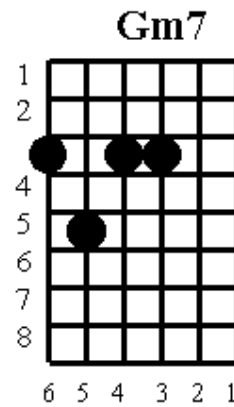
2nd fret = F7  
4th fret = G7  
6th fret = A7  
8th fret = B7  
9th fret = C7  
11th fret = D7  
13th fret = E7

## Guitar Chords Made Easy

### No. 13

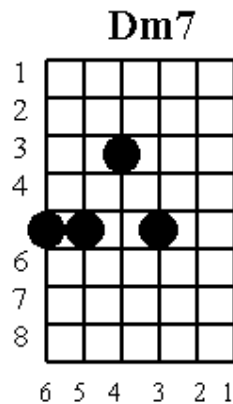


2nd fret = Am7  
4th fret = Bm7  
5th fret = Cm7  
7th fret = Dm7  
9th fret = Em7  
10th fret = Fm7  
12th fret = Gm7

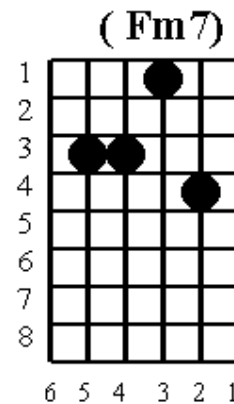


1st fret = Fm7  
3rd fret = Gm7  
5th fret = Am7  
7th fret = Bm7  
8th fret = Cm7  
10th fret = Dm7  
12th fret = Em7

### No. 14



1st fret = Cm7  
3rd fret = Dm7  
5th fret = Em7  
6th fret = Fm7  
8th fret = Gm7  
10th fret = Am7  
12th fret = Bm7

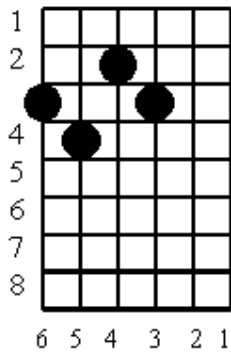


1st fret = Fm7  
3rd fret = Gm7  
5th fret = Am7  
7th fret = Bm7  
8th fret = Cm7  
10th fret = Dm7  
12th fret = Em7

## Guitar Chords Made Easy

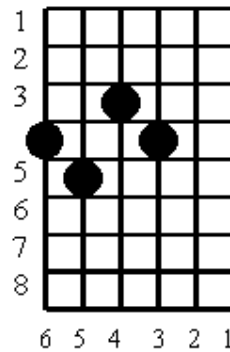
### No. 15

#### **G dim**



2nd fret = G dim  
4th fret = A dim  
6th fret = B dim  
7th fret = C dim  
9th fret = D dim  
11th fret = E dim  
12th fret = F dim

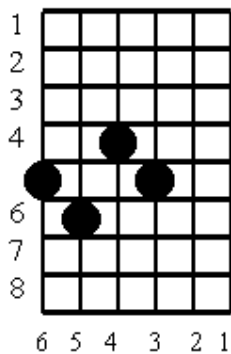
#### **F dim**



2nd fret = E dim  
3rd fret = F dim  
5th fret = G dim  
7th fret = A dim  
9th fret = B dim  
10th fret = C dim  
12th fret = D dim

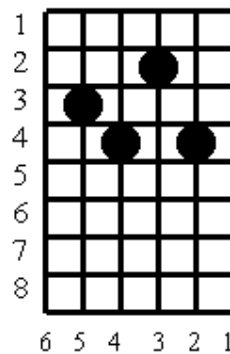
### No. 16

#### **C dim**



3rd fret = B dim  
4th fret = C dim  
6th fret = D dim  
8th fret = E dim  
9th fret = F dim  
11th fret = G dim  
13th fret = A dim

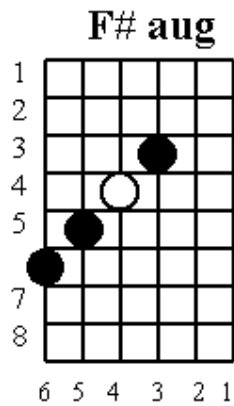
#### **( C dim )**



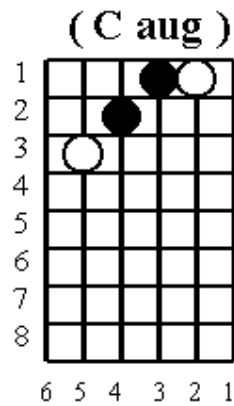
2nd fret = C dim  
4th fret = D dim  
6th fret = E dim  
7th fret = F dim  
9th fret = G dim  
11th fret = A dim  
13th fret = B dim

## Guitar Chords Made Easy

### No. 17



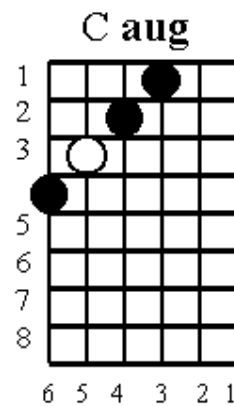
3rd fret = F# aug  
4th fret = G aug  
6th fret = A aug  
8th fret = B aug  
9th fret = C aug  
11th fret = D aug  
13th fret = E aug



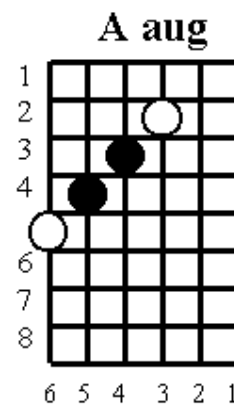
Root = ○

1st fret = C aug  
3rd fret = D aug  
5th fret = E aug  
6th fret = F aug  
8th fret = G aug  
10th fret = A aug  
12th fret = B aug

### No. 18



1st fret = C aug  
3rd fret = D aug  
5th fret = E aug  
6th fret = F aug  
8th fret = G aug  
10th fret = A aug  
12th fret = B aug

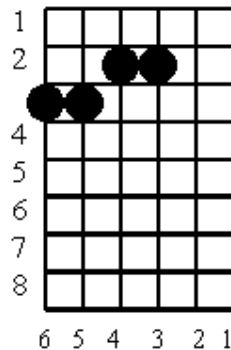


2nd fret = A aug  
4th fret = B aug  
5th fret = C aug  
7th fret = D aug  
9th fret = E aug  
10th fret = F aug  
12th fret = G aug

## Guitar Chords Made Easy

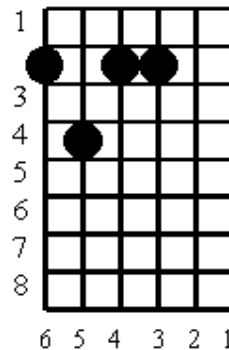
### No. 19

#### **C6**



2nd fret = C6  
4th fret = D6  
6th fret = E6  
7th fret = F6  
9th fret = G6  
11th fret = A6  
13th fret = B6

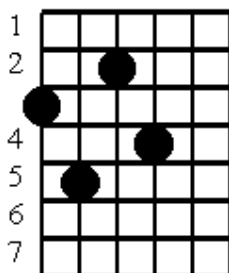
#### **A6**



2nd fret = A6  
4th fret = B6  
5th fret = C6  
7th fret = D6  
9th fret = E6  
10th fret = F6  
12th fret = G6

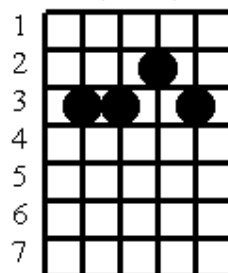
### No. 20

#### **G6**



2nd fret = G6  
4th fret = A6  
6th fret = B6  
7th fret = C6  
9th fret = D6  
11th fret = E6

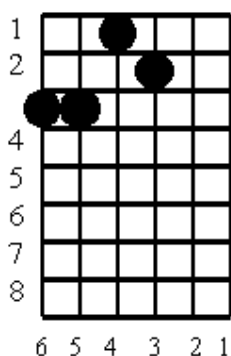
#### **( F6 )**



2nd fret = F6  
4th fret = G6  
6th fret = A6  
8th fret = B6  
9th fret = C6  
11th fret = D6

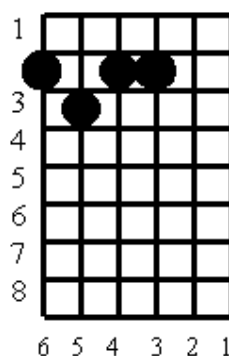
### No. 21

#### **Cm6**



1st fret = Cm6  
3rd fret = Dm6  
5th fret = Em6  
6th fret = Fm6  
8th fret = Gm6  
10th fret = Am6  
12th fret = Bm6

#### **Am6**

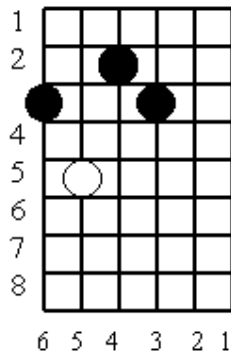


2nd fret = Am6  
4th fret = Bm6  
5th fret = Cm6  
7th fret = Dm6  
9th fret = Em6  
10th fret = Fm6  
12th fret = Gm6

## Guitar Chords Made Easy

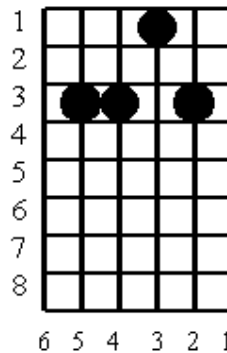
### No. 22

#### **Gm6 \***



2nd fret = Gm6  
4th fret = Am6  
6th fret = Bm6  
7th fret = Cm6  
9th fret = Dm6  
11th fret = Em6  
12th fret = Fm6

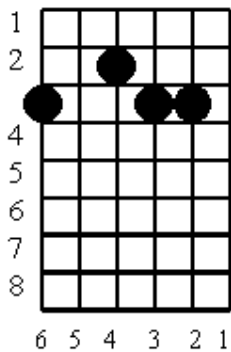
#### **( Fm6 )**



1st fret = Fm6  
3rd fret = Gm6  
5th fret = Am6  
7th fret = Bm6  
8th fret = Cm6  
10th fret = Dm6  
12th fret = Em6

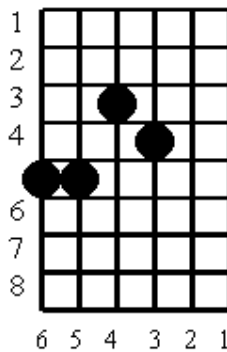
### No. 23

#### **C9**



2nd fret = C9  
4th fret = D9  
6th fret = E9  
7th fret = F9  
9th fret = G9  
11th fret = A9  
13th fret = B9

#### **G9**

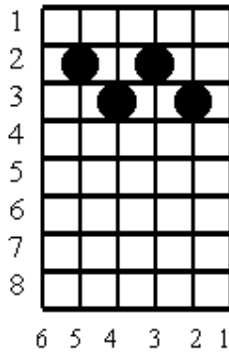


1st fret = F9  
3rd fret = G9  
5th fret = A9  
7th fret = B9  
8th fret = C9  
10th fret = D9  
12th fret = E9

## Guitar Chords Made Easy

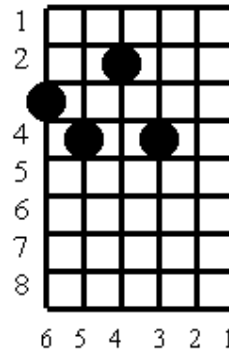
### No. 24

#### **G9**



2nd fret = G9  
4th fret = A9  
6th fret = B9  
7th fret = C9  
9th fret = D9  
11th fret = E9  
12th fret = F9

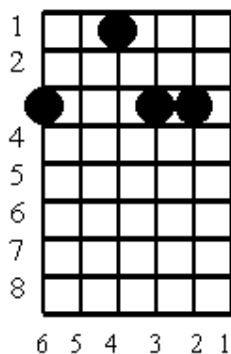
#### **(A9)**



2nd fret = A9  
4th fret = B9  
5th fret = C9  
7th fret = D9  
9th fret = E9  
10th fret = F9  
12th fret = G9

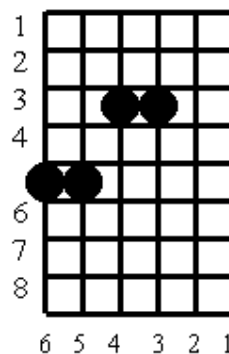
### No. 25

#### **Cm9**



1st fret = Cm9  
3rd fret = Dm9  
5th fret = Em9  
6th fret = Fm9  
8th fret = Gm9  
10th fret = Am9  
12th fret = Bm9

#### **Gm9**

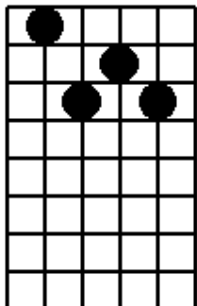


1st fret = Fm9  
3rd fret = Gm9  
5th fret = Am9  
7th fret = Bm9  
8th fret = Cm9  
10th fret = Dm9  
12th fret = Em9

## Guitar Chords Made Easy

### No. 26

**Gm9**

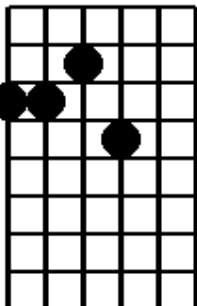


A guitar fretboard diagram for the Gm9 chord. The fretboard is an 8x6 grid. The strings are numbered 1 to 6 from top to bottom. The frets are numbered 1 to 8 from left to right. Fingering dots are placed at: 1st fret, 2nd string; 3rd fret, 4th string; 3rd fret, 5th string; 4th fret, 6th string.

1st fret = Gm9  
3rd fret = Am9  
5th fret = Bm9  
6th fret = Cm9  
8th fret = Dm9  
10th fret = Em9  
11th fret = Fm9

6 5 4 3 2 1

**( Am9 )**



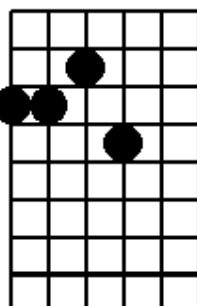
A guitar fretboard diagram for the (Am9) chord. The fretboard is an 8x6 grid. The strings are numbered 1 to 6 from top to bottom. The frets are numbered 1 to 8 from left to right. Fingering dots are placed at: 2nd fret, 3rd string; 4th fret, 4th string; 4th fret, 5th string; 5th fret, 6th string.

2nd fret = Am9  
4th fret = Bm9  
5th fret = Cm9  
7th fret = Dm9  
9th fret = Em9  
10th fret = Fm9  
12th fret = Gm9

6 5 4 3 2 1

### No. 27

**Cmaj7**

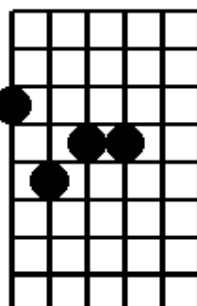


A guitar fretboard diagram for the Cmaj7 chord. The fretboard is an 8x6 grid. The strings are numbered 1 to 6 from top to bottom. The frets are numbered 1 to 8 from left to right. Fingering dots are placed at: 2nd fret, 3rd string; 4th fret, 4th string; 4th fret, 5th string; 5th fret, 6th string.

2nd fret = Cmaj7  
4th fret = Dmaj7  
6th fret = Emaj7  
7th fret = Fmaj7  
9th fret = Gmaj7  
11 fret = Amaj7  
13fret = Bmaj7

6 5 4 3 2 1

**Gmaj7**



A guitar fretboard diagram for the Gmaj7 chord. The fretboard is an 8x6 grid. The strings are numbered 1 to 6 from top to bottom. The frets are numbered 1 to 8 from left to right. Fingering dots are placed at: 1st fret, 2nd string; 4th fret, 3rd string; 4th fret, 4th string; 5th fret, 5th string.

1st fret = Fmaj7  
3rd fret = Gmaj7  
5th fret = Amaj7  
7th fret = Bmaj7  
8th fret = Cmaj7  
10 fret = Dmaj7  
12 fret = Emaj7

6 5 4 3 2 1

## Guitar Chords Made Easy

### No. 28

| <b>Amaj7</b> |   | <b>( D maj7 )</b> |  |
|--------------|---|-------------------|--|
|              | 2nd fret =Amaj7<br>4th fret =Bmaj7<br>5th fret =Cmaj7<br>7th fret =Dmaj7<br>9th fret =Emaj7<br>10 fret = Fmaj7<br>12 fret = Gmaj7 |                   | 2nd fret =Dmaj7<br>4th fret =Emaj7<br>5th fret =Fmaj7<br>7th fret =Gmaj7<br>9th fret =Amaj7<br>10 fret = Bmaj7<br>11 fret= Cmaj7 |
| 6 5 4 3 2 1  |   | 6 5 4 3 2 1       |  |

### No. 29

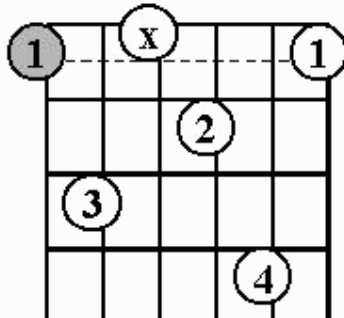
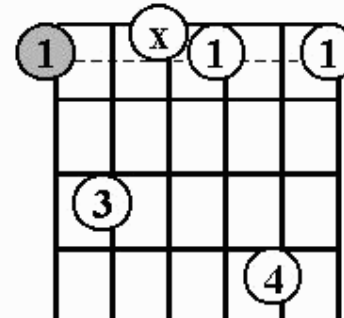
| <b>G7-5 or Db7-5</b> |   | <b>G7-5 or Db7-5</b> |   |
|----------------------|---|----------------------|---|
|                      | 1st F7-5 or B7-5<br>3rd G7-5 or Db7-5<br>5th A7-5 or Eb7-5<br>7th B7-5 or F7-5<br>8th C7-5 or Gb7-5<br>10th D7-5 or Ab7-5<br>12th E7-5 or Bb7-5 |                      | 1st F7-5 or B7-5<br>3rd G7-5 or Db7-5<br>5th A7-5 or Eb7-5<br>7th B7-5 or F7-5<br>8th C7-5 or Gb7-5<br>10th D7-5 or Ab7-5<br>12th E7-5 or Bb7-5 |
| 6 5 4 3 2 1          |   | 6 5 4 3 2 1          |   |

### No. 30

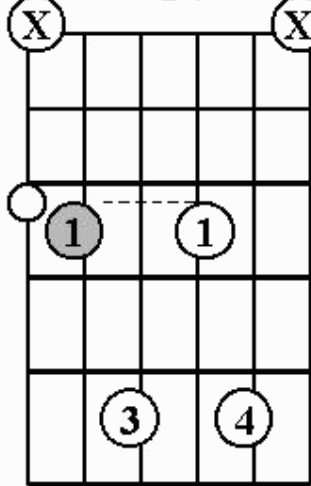
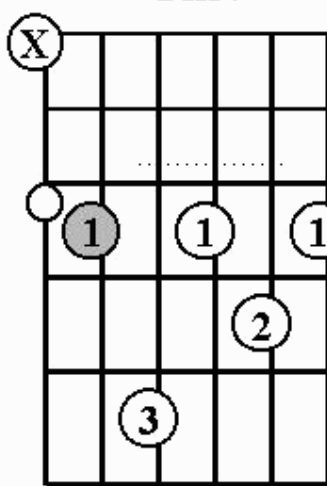
| <b>C7-5 or F#7-5</b> |   | <b>F7-5 or B7-5</b> |   |
|----------------------|---|---------------------|---|
|                      | 2nd B7-5 or F7-5<br>3rd C7-5 or Gb7-5<br>5th D7-5 or Ab7-5<br>7th E7-5 or Bb7-5<br>8th F7-5 or B7-5<br>10th G7-5 or Db7-5 |                     | 2nd E7-5 or Bb7-5<br>3rd F7-5 or B7-5<br>5th G7-5 or Db7-5<br>7th A7-5 or Eb7-5<br>9th B7-5 or F7-5<br>10th C7-5 or Gb7-5 |
| 6 5 4 3 2 1          |   | 6 5 4 3 2 1         |   |

## Guitar Chords Made Easy

### No. 31

|   |  |  |   |
|---|--|--|---|
| <p><b>F7</b></p>  <p style="text-align: center;">6 5 4 3 2 1</p> | <p>01 = F7<br/>03 = G7<br/>05 = A7<br/>07 = B7<br/>08 = C7</p> | <p><b>F m7</b></p>  <p style="text-align: center;">6 5 4 3 2 1</p> | <p>01 = Fm7<br/>03 = Gm7<br/>05 = Am7<br/>07 = Bm7<br/>08 = Cm7</p> |
|---|--|--|---|

### No. 32

|   |   |  |  |
|---|---|--|--|
| <p><b>C7</b></p>  <p style="text-align: center;">6 5 4 3 2 1</p> | <p>01 = Bb7<br/>03 = C7<br/>05 = D7<br/>07 = E7<br/>08 = F7<br/>10 = F7<br/>12 = A7</p> | <p><b>Cm7</b></p>  <p style="text-align: center;">6 5 4 3 2 1</p> | <p>01 = Bbm7<br/>03 = Cm7<br/>05 = Dm7<br/>07 = Em7<br/>08 = Fm7<br/>10 = Gm7<br/>12 = Am7</p> |
|---|---|--|--|

Guitar Chords Made Easy

**No. 33** Progression To Practice

|             |       |             |    |                |       |             |    |
|-------------|-------|-------------|----|----------------|-------|-------------|----|
| F           |       | C7          |    | C              |       | G7          |    |
| / / / / / / |       | / / / / / / |    | / / / / / /    |       | / / / / / / |    |
| F6          | F#dim | Gm7         | C7 | C6             | C#dim | Dm7         | G7 |
| G           |       | D7          |    | B <sup>b</sup> |       | F7          |    |
| / / / / / / |       | / / / / / / |    | / / / / / /    |       | / / / / / / |    |
| G6          | G#dim | Am7         | D7 | Bb6            | Bdim  | Cm7         | F7 |